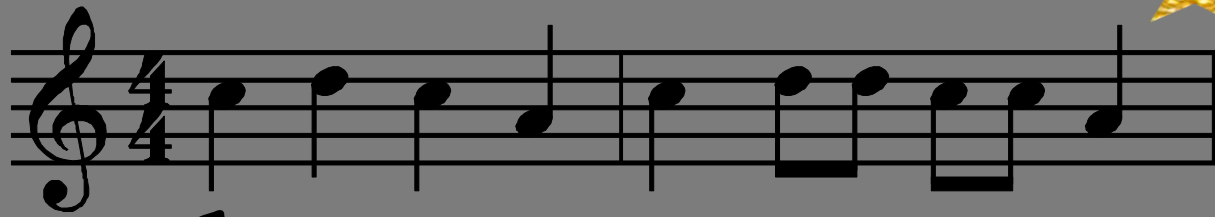




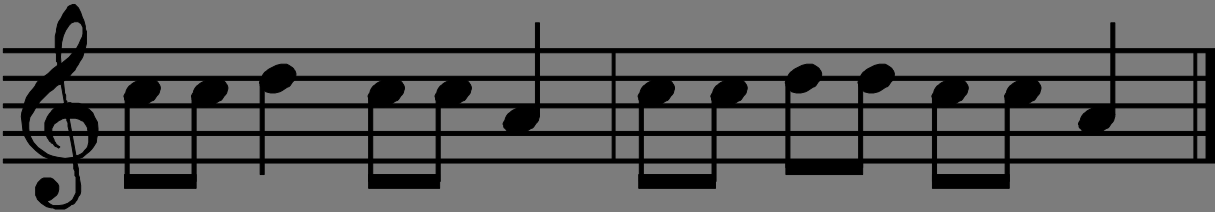


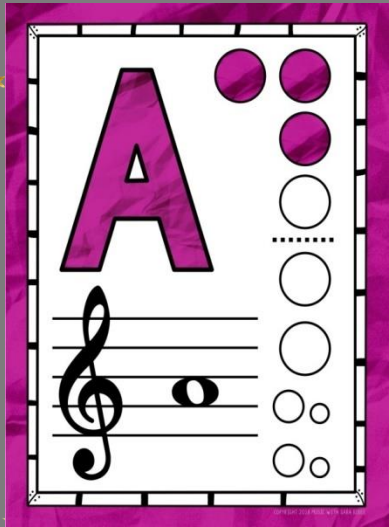
4
4 ♪ ♪ ♪ ♪ | ♪ ♪ ♪ ♪ |

♪ ♪ ♪ ♪ | ♪ ♪ ♪ ♪ ||

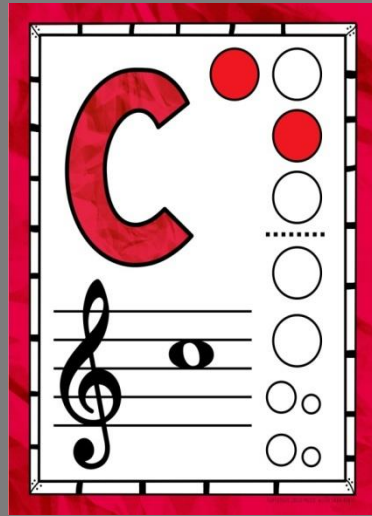


S

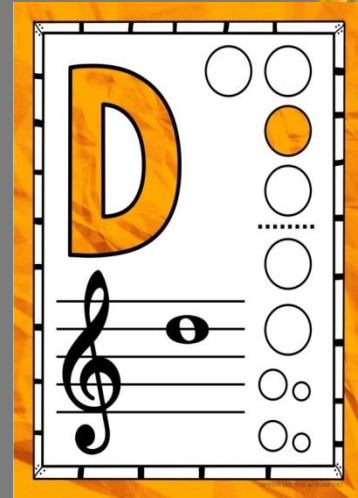




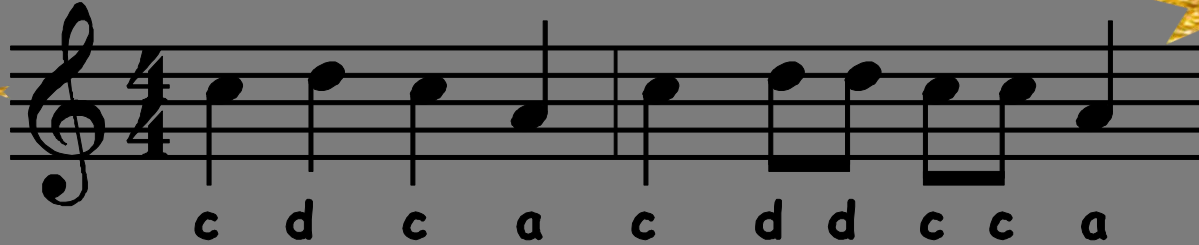
A musical note card for the letter 'A'. The card has a purple marbled border. It features a large purple letter 'A' with a dot above it. To the right of the letter are four colored circles: two purple, one white, and one white. Below the letter is a musical staff with a treble clef and a whole note 'A' on the second line. To the right of the staff are four circles: one white, one white, one white, and one white.



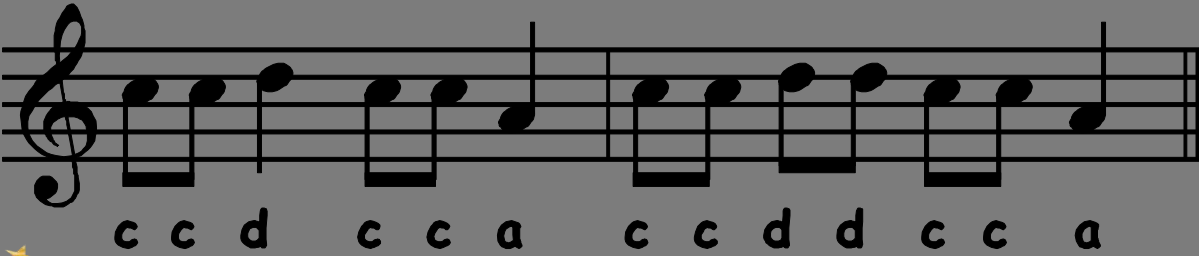
A musical note card for the letter 'C'. The card has a red marbled border. It features a large red letter 'C' with a dot above it. To the right of the letter are four colored circles: one red, one white, one white, and one white. Below the letter is a musical staff with a treble clef and a whole note 'C' on the first line. To the right of the staff are four circles: one white, one white, one white, and one white.



A musical note card for the letter 'D'. The card has an orange marbled border. It features a large orange letter 'D' with a dot above it. To the right of the letter are four colored circles: one white, one orange, one white, and one white. Below the letter is a musical staff with a treble clef and a whole note 'D' on the second line. To the right of the staff are four circles: one white, one white, one white, and one white.



A musical staff in 4/4 time with a treble clef. The notes are: C4 (quarter), D4 (quarter), C4 (quarter), A3 (quarter), C4 (quarter), D4 (quarter), D4 (quarter), C4 (quarter), C4 (quarter), A3 (quarter). Below the staff are the syllables: c d c a c d d c c a.



A musical staff in 4/4 time with a treble clef. The notes are: C4 (quarter), C4 (quarter), D4 (quarter), C4 (quarter), C4 (quarter), A3 (quarter), C4 (quarter), C4 (quarter), D4 (quarter), D4 (quarter), C4 (quarter), C4 (quarter), A3 (quarter). Below the staff are the syllables: c c d c c a c c d d c c a.



Starlight, Starbright



Star -light, star- bright first star I see to -night.



Wish I may, wish I might, have the wish I wish to- night.